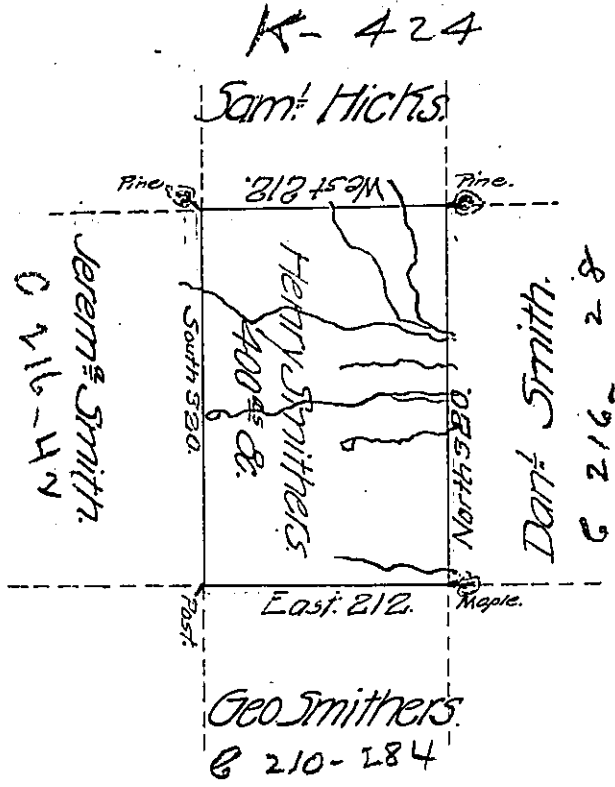


Foster -  
Luzerne



Draft of a tract of land Called— Situate on the Waters of Laurel (obl) reek Joining Land Surveyed for Geo. Smithers and others in the County of Northum<sup>r</sup>. Containing four Hundred Acres & Allowance surveyed for Henry Smithers the 24<sup>th</sup> day of Sep<sup>r</sup> 1793. by Virtue of a Warrant dated the 2<sup>d</sup> day of August 1793.

To Daniel Brodhead Esq<sup>r</sup>.  
 Sur<sup>v</sup><sup>r</sup> Gen<sup>l</sup>. }

IN TESTIMONY that the above is a copy of the original remaining on file in the Department of Internal Affairs of Pennsylvania, made conformably to an Act of Assembly approved the 16th day of February 1833, I have hereunto set my hand and caused the Seal of said Department to be affixed at Harrisburg, this Twenty-first day of December 1906.

*Isaac P. Brown*  
 Secretary of Internal Affairs.